

Vote for your favorites! PDX Parent Picks 2021

pdx/parent

for the long days and short years

the CITY GUIDE

*Family-friendly spots
to live, play and eat*

Nurturing Families. Developing Futures.

Schedule an in-person or virtual appointment at one of our 5 locations today.

Services include:

NEWBORN

WELL CHILD

BEHAVIORAL HEALTH

DEVELOPMENTAL CARE

& MORE

Call: (503) 659-1694 -OR-
Visit: Oregonpediatrics.com



Clackamas & Oregon Pediatrics
Nurturing Families. Developing Futures.

Creating Families

one step at a time

Become a surrogate and help bring someone's dream of parenthood to life while earning up to

\$40,000

with a bonus of \$750 for signing today.



SURRO
CONNECTIONS

COMPASSION, HOPE, AND THE MIRACLE OF LIFE

www.surroconnections.com
info@surroconnection.com

503-489-5067



INTERACTIVE ONLINE STEM PROGRAMS

Education and hands-on science engagement, virtually!

503-230-8040

Portland.Madscience.org





Metropolitan
Pediatrics, L.L.C.



BABY, COME BACK!

We're open!

Call today for virtual & in-person care >> **833.PDX.kids** | metropediatrics.com

LET IT SNOW.

Get winter-ready
with Beanstalk!



FREMONT
3527 NE 15th Ave.
Portland, OR 97212
503.477.7776

MONTAVILLA
8021 SE Stark St.
Portland, OR 97215
503.327.8506

shopbeanstalk.com • beanstalkpdx.com

REMARKABLY DIFFERENT



FRANCISCAN
MONTESSORI EARTH SCHOOL
REMARKABLY DIFFERENT

Small, mixed-age classroom groups.
State approved Health and Safety Plan.

Expanding Minds.

Exploration of language, art, and science in step with a child's interests and needs.

Nurturing Spirits.

Individualized instruction within a community of kindness and respect.

Stewarding the Earth.

Access to acres of outdoor gardens for learning and play.

Franciscan Montessori Earth School
Portland, Oregon, 97236-2316 | 503-760-8220

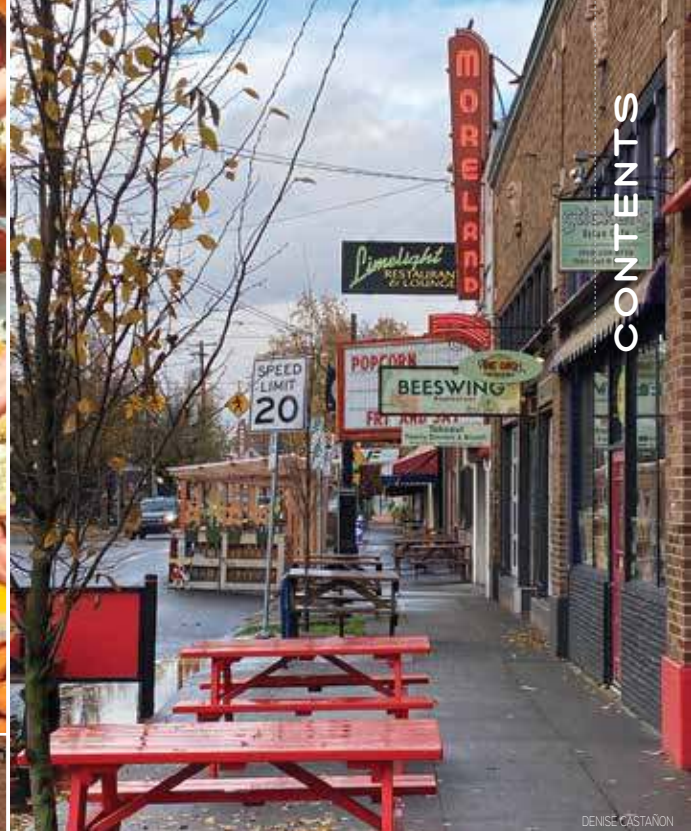
INFO@FMES.ORG **WWW.FMES.ORG**



ERN J. BERNARD



BOB MOY



DENISE CASTAÑON



NATALIE GILDESLLEEVE



PORTLAND PARKS AND RECREATION

PDX Parent's City Guide

Take a deep dive into family-friendly neighborhoods across the quadrants and beyond. Find family-tested places to eat and play; housing costs; transit, walk and bike scores; and much more.

North:	
St. Johns neighborhood.....	8
Northeast:	
King neighborhood.....	12
Southeast:	
Sellwood-Moreland neighborhood.....	16
Southwest:	
Maplewood neighborhood.....	20
Northwest:	
Alphabet District.....	24
The 'Burbs:	
Highland neighborhood.....	28

BONUS STORIES	
Editor's Note.....	6
Friendly Neighborhoods for LGBTQ+ Families.....	9
Supporting Local Black-owned Businesses.....	13
GreatSchools.org: Ratings Aren't the Whole Story.....	14
South Portland, What's in a Name?.....	21
PDX Trend: Fried-chicken Goodness.....	25

RESOURCES	
City Guide Listings	
A helpful directory to find everything your family needs — from dentists to dance classes.....	10
School Open Houses.....	31

*cover stories

Loving Portland, Warts and All

Over the summer, I got calls and texts from friends and family outside of Portland who wanted to know if my family and I were OK. They'd seen the repeated news coverage of a few blocks of downtown where federal officers hurled tear gas at people protesting police brutality and racial injustice. And they'd heard that a certain Twitter user was talking smack about our city, labeling us as an "anarchist jurisdiction" and wrongly saying, "A city like Portland, the entire city is ablaze, all the time."



Meanwhile, at that time, my family was heading to Sellwood's Riverfront Park to swim in the Willamette and trying out the new COVID-19 safety procedures at Salt & Straw, after not visiting the ice cream shop for months. Meaning life in Portland — except for those who lived within a few blocks of the Mark O. Hatfield Courthouse — was pretty normal (for a pandemic).

We all know that Portland does have its problems. Far too many people don't have a safe place to live. Many small businesses have had to close due to the pandemic. And our state's roots are founded in racism and it is still affecting Black families and other families of color today. So in our first-ever *PDX Parent City Guide*, while we are celebrating the many reasons why Portland is a great place to raise a family, we are also being real about its downsides. In our City Guide, we spotlight one neighborhood from each quadrant and share what families love about it — from parks to takeout

spots to walkability. And it's definitely a delicate balance to highlight a wonderful community like the King neighborhood in Northeast, without adding to the gentrification that has displaced Black families from the historically Black neighborhood. But we also think it is important to challenge the sometimes unconscious bias that "good" neighborhoods and schools means "white" neighborhoods and schools.

To make this special issue even more helpful, we're including City Guide Listings starting on page 10. You'll want to refer to this useful directory all year long; you'll find everything from preschools to physical therapists to pediatricians.

And to keep on celebrating Portland, we're rolling out the nominees for the 2021 PDX Parent Picks readers' roll. Local businesses tell us that being voted to a top spot really means the world to them. So in a time when many places are struggling, your vote is more important than ever. Vote for your family's favorites at pdxparent.com/vote.

-Denise



On our cover: Nothing says Portland like the iconic St. Johns Bridge! Thanks to photographer **Natalie Gildersleeve** for the lovely shot of Kala and Natalie Schraner and their adorable babies in front of a St. Johns mural celebrating the bridge. (The mural was designed by Carson Ellis, Portland-based illustrator of the *Wildwood* books.) Read more about St. Johns on page 8. And see more of Gildersleeve's gorgeous work at nataliegildersleeve.com and on Instagram @nataliegildersleeve.

WHAT'S YOUR FAVORITE NEIGHBORHOOD IN PDX, OTHER THAN YOUR OWN?

“ Sellwood. I love the shops and restaurants, and its proximity to the river and Oaks Park.

We are always going to Woodstock for takeout from Ate-Oh-Ate, Dick's Primal Burger or Grand Central Bakery.

I haven't visited any other neighborhoods in over a year!

Multnomah Village. We used to live walking distance to the Village and loved it. And I still like to visit for Thinker Toys, Annie Bloom's Books and the yarn store (even though I only dream of knitting).

”

PDX Parent
P.O. Box 13660
Portland, OR 97213-0660
Phone: 503-460-2774

Publisher
Rose Caudillo, 503-460-2774
publisher@pdxparent.com

Editor
Denise Castañon, 503-922-0893
denise.castanon@pdxparent.com

Art Director
Susan Bard

Web Director
Michelle Carew, 503-914-6151
michelle.carew@pdxparent.com

IT Support Specialist
Lionel Di Giacomo
lionel.digiacomo@pdxparent.com

Eastside Account Executive
Lauren Wylie, 503-331-8184
lauren.wylie@pdxparent.com

Westside Account Executive
Jill Weisensee, 503-309-8272
jill.weisensee@pdxparent.com

Newsletter and Calendar Editor
Melissa Light
melissa.light@pdxparent.com

Finance Manager
Christie Kline, 503-810-9817
christie.kline@pdxparent.com

President
Jill Weisensee
jill.weisensee@pdxparent.com

For distribution issues, e-mail us at
distribution@pdxparent.com

For calendar submissions,
e-mail us at calendar@pdxparent.com

PDX Parent is published monthly (except July) by Northwest Parent, LLC., and is copyright 2021 Northwest Parent, LLC. All rights reserved. Reproduction in whole or in part without written permission is prohibited. *PDX Parent* is distributed free of charge throughout the Portland, OR / Vancouver, WA metropolitan area.

PDX Parent reserves the right to refuse advertising for any reason. Distribution of this publication does not constitute an endorsement of the products or services advertised herein.

PDX Parent does not discriminate on the basis of race, color, national origin, religion, disability, gender, gender expression, sex or sexual orientation.

Although every effort is taken to ensure the accuracy of published material, Northwest Parent, LLC., and its agents and employees cannot be held responsible for the use or misuse of any information contained herein. The contents of *PDX Parent* and its website are for informational purposes only and are not intended to be a substitute for professional advice or treatment.



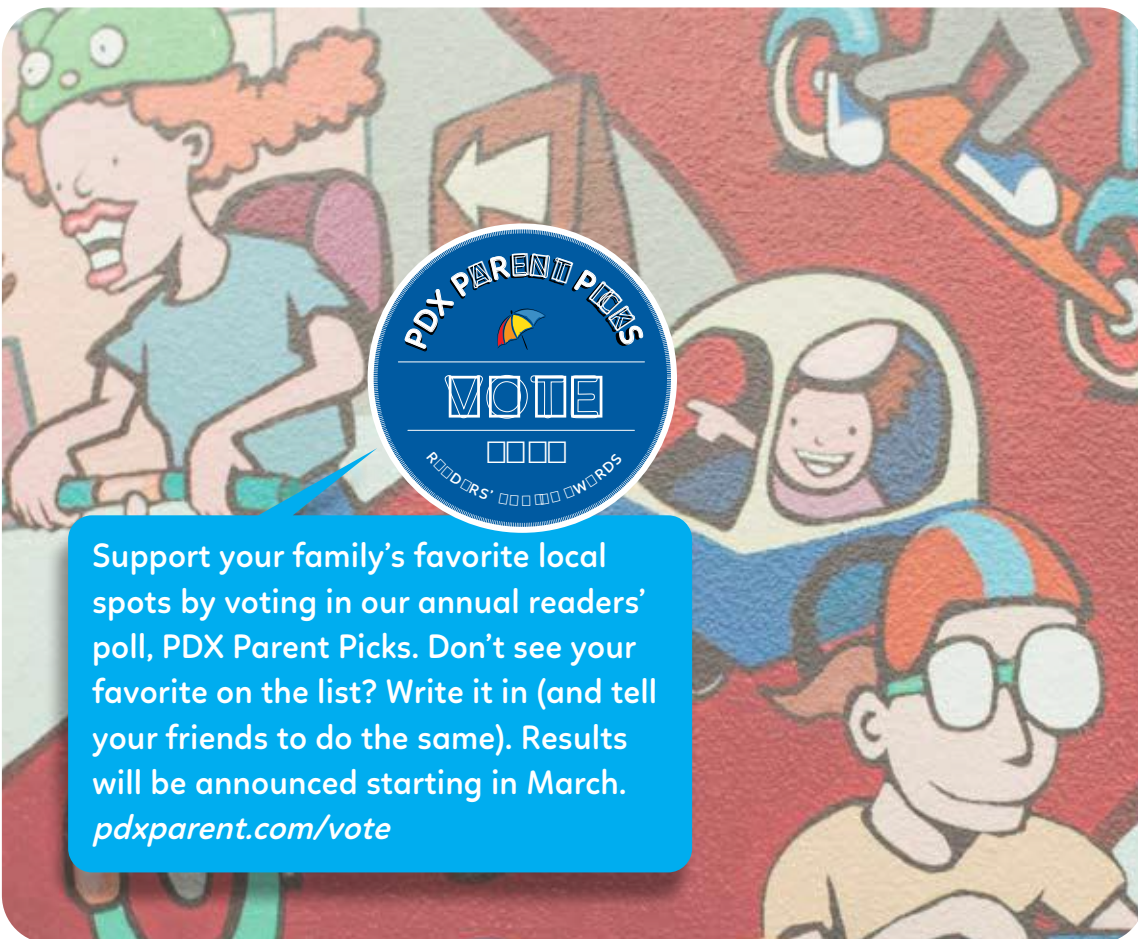
ALBERTINA KERR

"I saw something I didn't see before—a really bright future."

—Kerr teen client

Kerr is here 24/7 with life-saving children's mental health services and essential support for children, teens, and adults experiencing intellectual and/or development disabilities.

AlbertinaKerr.org



PDX PARENT PICKS

VOTE

RODDERS' WORDS

Support your family's favorite local spots by voting in our annual readers' poll, PDX Parent Picks. Don't see your favorite on the list? Write it in (and tell your friends to do the same). Results will be announced starting in March.

pdxparent.com/vote

North: St. Johns Neighborhood



Bruce Orr's vibrant mural at Peninsula Station is a joyful celebration of life in St. Johns.

NATALIE GILDERSLEEVE

Plenty of Portlanders are proud of their neighborhoods, but when it comes to community spirit, St. Johns is in a class of its own. Intimate, tucked back and boasting a bustling downtown some locals call "The Village," this neighborhood operates more like its own little town — which indeed it was, briefly, from 1902 to 1915, before being annexed to Portland proper. A walkable, family-oriented atmosphere, a profusion of parks and a roster of beloved annual events, including a parade and jazz festival, round out the neighborhood fun.

"I always wanted to live in St. Johns," says resident Natalie Schraner. "I used to come [here] when I was a kid. My dad would buy work clothes at Jower's — an old men's boot shop — then we'd have a burger somewhere It seemed like its own self-sufficient town."

Today, she and her wife, Kala Schraner, are happily raising their two girls — Vesper, 2 ½, and Navy, 6 months — plus a cat named Muus and a Chihuahua-mutt named Gus, right in the heart of St. Johns.

Gentrification has dramatically reshaped North Portland since her girlhood excursions to the peninsula, but Schraner and her neighbors remain committed to preserving this historic neighborhood's diverse and welcoming vibe. "St. Johns is the people's village, where blue-collared roots run deep," she says. "We have fierce conversations about gentrification — and who lit the latest bottle rocket."

get around



44
Transit score



64
Walk score



83
Bike score

SOURCE: WALK SCORE

Please follow all public-health guidelines when visiting local parks.

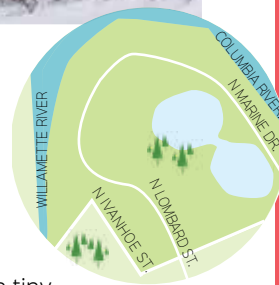
PORTLAND PARKS AND RECREATION



play here

Located at the peninsular meeting point of the Columbia and Willamette rivers, St. Johns sits at the doorstep of natural wonders galore, including acres of nearby explorable sloughs and wetlands. Sauvie Island is just a hop away, and the sprawling, square-mile **Cathedral Park**, situated just beneath our city's only true suspension bridge, offers rolling acres of green grass and a tiny, kid-friendly beach, perfect for launching a kayak or paddleboard.

Local families also gather at the **St. Johns Park** playground and sing the praises of **Pier Park**, which stays dryish throughout the year thanks to a thick, healthy tree canopy — a godsend in the age of COVID.



FRIENDLY NEIGHBORHOODS FOR LGBTQ+ FAMILIES

Portland consistently ranks as one of the most welcoming cities in the nation for LGBTQ+ folks, so just about any neighborhood is a good bet. But these three neighborhoods (in addition to St. Johns) are especially friendly.

Drive through the **Foster-Powell** and **Woodstock** neighborhoods in Southeast Portland and you'll see a number of rainbow flags waving proudly and families enjoying the parks and outdoor dining options.

The **Mississippi** neighborhood in North Portland is home to the Q Center, the largest LGBTQ+ community center in the Pacific Northwest, which provides safe spaces and community-building workshops and events.

— Denise Castañon



live here

\$402,500

Median home price

\$1,295

Average rent

SOURCES:
REDFIN AND ZUMPER

— Erin J. Bernard

eat here

St. Johns families can't get enough of **Slim's**  **Cocktail Bar & Restaurant**, a recently revamped century-old lounge where the fare is affordable and surprisingly delicious and kids are welcome. Other culinary favorites include the blueberry-beet muffins from **The Sparrow Bakery**, fish-and-chips at the **St. Johns Food and Beer Porch**, tacos at **Tienda Santa Cruz**, and hazelnut-and-strawberry pancakes at **John Street Café**. **StormBreaker St. Johns** brewery, which features a large covered and heated patio, is also proving a popular neighborhood gathering spot during the pandemic.



the CITY GUIDE listings

COVID-19 has been hard on so many aspects of our lives. But when you have kids, you have to keep pushing forward. And you still have to see to your family's needs. The listings in this directory will help you find what you need for your family. We've also included some of the nominees for our PDX Parent Picks readers' poll. Voting is now open at pdxparent.com/vote, and your vote matters more than ever to local businesses. While we are celebrating Portland's family-friendly establishments, we also wanted to take a moment to remember a few of the great places that had to

shutter in 2020. North Portland families will miss creating at **Smartypants** art studio. **The Playground Gym**, with locations on North Lombard Street and Northeast Grand Avenue, was a favorite place for littles to tumble, climb and romp. The popular Southeast breakfast joint **Arleta Library Bakery Cafe** closed shop due to the uncertainty of COVID-19 shutdowns. And Tigard's **Sky High Sports** trampoline course and indoor play area shuttered early in the pandemic. Portland families will no doubt miss these wonderful businesses.

ARTS and ENTERTAINMENT

ARTS & CRAFTS VISUAL ARTS FILMMAKING

ARTS & CRAFTS 2020 PARENT PICKS

Art World School
Children's Healing Art Project (CHAP)
Craft Factory
Nic & Fig's
One River School
Portland Child Art Studio
SCRAP PDX

Collage - collagepdx.blogspot.com
Confection Crafts - confectioncrafts.com
Mimosa Studios - mimosastudios.com
Multnomah Arts Center - multnomahartscenter.org
SunnyLove - A Child's Creative Space - sunnylovepdx.com
Vibe of Portland - vibepdx.org
Vine Gogh Artist Bar & Studio - vinegogh.com

DRAMA/THEATER

PERFORMING ARTS COMPANY

2020 PARENT PICKS

Echo Theater
ENCORE Performing Arts Center
Northwest Children's Theater and School
Oregon Ballet Theatre
Oregon Children's Theatre
Oregon Symphony
Portland Metro Arts

Broadway Across America - broadwayacrossamerica.com
Broadway Rose Theatre Company - broadwayrose.org
ComedySportz 4 Kidz - portlandcomedy.com
Echo Theater Company - echotheaterpdx.org
El Centro Milagro - milagro.org
Imago Theatre - imagotheater.com
Krayon Kids Musical Theater Co. - krayonkids.org
Lakewood Theatre Company - lakewood-center.org
Metropolitan Performing Arts Theater - metropolitanperformingarts.org

Northwest Children's Theater and School - nwcts.org
Portland Revels - portlandrevels.org
Shakespeare in the Parks - portlandactors.com
Shaking the Tree Theatre - shaking-the-tree.com
STAGES Performing Arts Youth Academy - stagesyouth.org
Stumptown Stages - stumptownstages.com
Theatre in the Grove - theatreinthegrove.org

MUSIC INSTRUCTION

Music Together of Portland

Music and movement classes for children, ages 0-8, and their beloved grown-ups. Find joy, connection, and musical community as you sing and dance together in a fun, musically rich environment
503-236-4304

julie@musictogether-pdx.com,
musictogether-pdx.com/

Artichoke Community Music - artichokemusic.org
Beacock Music - beacockmusic.com
Bennett Suzuki Violin Studio - ediebennett.com
Community Music Center - communitymusiccenter.org
Concert School of Music - musicmanstudio.com

Ethos Music Center - ethos.org
Lake Oswego Music Academy - lomusicacademy.com
Melodyway Music Center - melodyway.com
Mindful Musicians - mindfulmusicians.com
Music Seeds - musicseeds.com
Oregon Music Academy - oregonmusicacademy.com
Oregon Music Teachers Assn - omta-portland.org
Portland Music School - pdxmusicschool.com
Portland Piano Lab - portlandpianolab.com
Rock 'n' Roll Camp for Girls - girlsrockcamp.org
Rose City Music Academy - rosecitymusicacademy.com

BIRTHDAYS

BIRTHDAY PARTY SPOTS

CeramiCafe Art Lounge - ceramicafenw.com
Metro Gymnastics Center - metrogymanastics.com
The Monkey King Playhouse - monkeykingplayhouse.com
Pietro's Pizza - pietrosrestaurants.com
Rainbow Trout Farm - rainbowtroutfarm.com

KINDIE MUSICIANS/ PERFORMERS

2020 PARENT PICKS

Kelli Welli

Micah and Me Children's Music Show

Mo Phillips

Mr. Ben Music

Olive & Dingo Productions

Penny's Puppet Productions

Red Yarn Productions

Rock N' Roll Fairy

Tallulah's Daddy

Alexander, Master of Marvels -
parlorofwonders.com

Dragon Theater Puppets & Princesses -
dragontheater.com

PegStilts.com: Peg Stilts for Kids and
Adults - pegstilts.com

Portland Princess Party -
portlandprincessparty.com

EDUCATION

CHILD CARE/ DAY CARE/NANNIES

A Brilliant Nanny LLC - abnanny.com

Fruit & Flower Child Development Center
at PCC Rock Creek - fruitandflower.org

Providence Wee Care Child Development
Center - oregon.providence.org

Spilt Milk Nannies - spiltmilknannies.com

FOREIGN LANGUAGE INSTRUCTION

FAIS - faispxd.org

German Int'l School - gspdx.org

International Leadership Academy -
ilapdx.org

The International School - intlschool.org

OES - oes.edu/

Scola Italiana - scuola.us/

PRESCHOOLS

Agia Sophia Academy - asapdx.org

AHSC Yu Miao Chinese - ahscpxd.org

Albina Head Start - albinahs.org

Childsworld Learning Center -
childsworld.org

Child's View Montessori School -
childsvie.net

Guidepost Montessori at Beaverton -
guidepostmontessori.com

Horizon Christian Schools Preschool-8th
- horizon-christian.org

The International School - intlschool.org

Lakeshore Montessori -
lakeshoremontessori.com

Montessori School of Beaverton -
msb.org

Sprout and Spark Preschool -
sproutandspark.com

PRIVATE SCHOOLS



Bridges Middle School

Bridges is the only middle school in Oregon specifically designed for students with learning differences to reach their maximum potential—in a loving, nurturing atmosphere located in downtown Portland. Our small class settings for 5th-8th graders incorporate individualized academics with social skills and support that set the foundation for success. Admission inquiries for the 2021-22 school year are open at BridgesMS.org.

2510 SW 1st Avenue
Portland, OR 97201

503-688-2922
info@bridgesms.org
www.bridgesms.org

Franciscan Montessori Earth School

The Franciscan Montessori Earth school offers quality Montessori education for students ages 2 1/2 to 8th grade. Small, mixed stage classrooms and a large campus provide a unique educational experience.

14750 SE Clinton
Portland, Oregon 97236

503-760-8220
info@fmes.org
FMES.org

Private Schools continue on page 14



Located in
NE Portland's
Hollywood District

3839 NE Tillamook St
Portland 97212
503.288.5891

info@hcdpdx.com
www.hcdpdx.com

Open Mon-Sat
Welcoming
New Patients

HOLLYWOOD CHILDREN'S DENTISTRY

Specialists in Pediatric Dentistry

Dr. Sheena Kansal and Dr. Natasha Bramley







BLACK WAGON
PORTLAND, OREGON

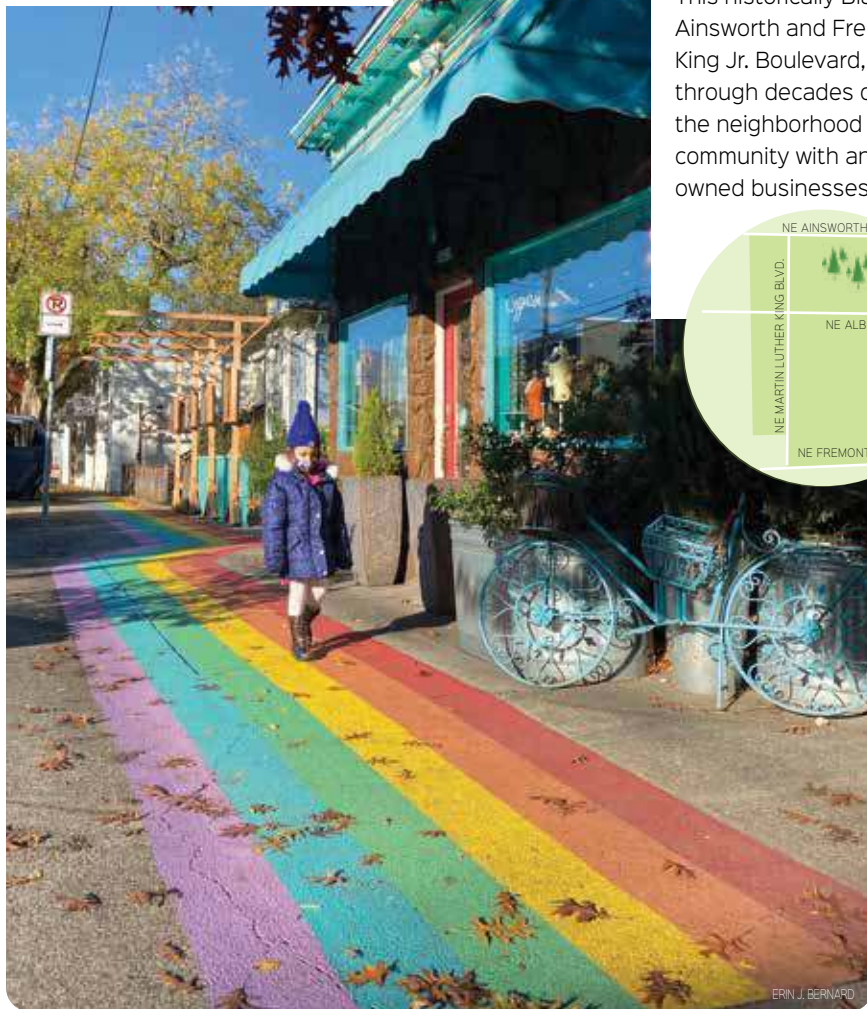
Clothing & Shoes
Toys & Books
Accessories & Gear

for newborn to tween!

3964 N. Mississippi Ave
503-916-0000
blackwagon.com



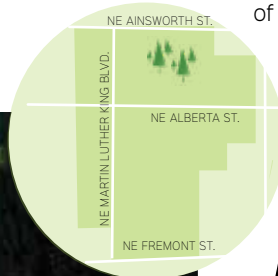
Northeast: King Neighborhood



Eclectic dining options, sky-high walking and biking scores, and a community of resident-advocates — there's lots to love about King.

This historically Black neighborhood, stretching between Ainsworth and Fremont streets and bisected by Martin Luther King Jr. Boulevard, has worked hard to maintain its proud identity through decades of displacement and city disinvestment. Today, the neighborhood is thriving thanks to the efforts of a close-knit community with an ongoing commitment to supporting Black-owned businesses, but as gentrification bumps up the cost

of living, the challenge has shifted to keeping that growth inclusive for all residents.



play here

King families often gather at Dr. Martin Luther King Jr. Elementary School's **King School Park**, which doubles as a community hub in the heart of the neighborhood, hosting the **King Farmers Market** May through November and plenty of other annual community-building events. (It's been a popular gathering spot for Black Lives Matter marchers throughout 2020.)

A deep tradition of grassroots organizing has also shaped the physical contours of King: In the 1990s, residents cleared out a vacant lot and persuaded the City of Portland to fund its transformation into **Two Plum Park**

— a beloved pint-sized playground for neighborhood littles.

At King's southern edge, **Irving Park** offers extra room to roam, and at the neighborhood's eastern boundary, the vibrant **Alberta Arts District** offers year-round strolling, murals galore and lots of super-local shopping, plus a colorful annual street fair.



get around



52
Transit score



89
Walk score



99
Bike score

SOURCE: WALK SCORE



live here

\$610,950

Median home price

\$1,899

Average rent for a 2-bedroom apartment

SOURCES:
REDFIN AND ZUMPER

Sharisha Hicks, owner of local day care Royal Owl Academy and a longtime King resident, loves the vibe here. "It's a good neighborhood to raise a family in," she says. "It's diverse, with good schools and good families."

Her own family's been in the neighborhood for half a century, and she's now raising up a fourth generation of King residents — Aminia, 17; Ameiah, 9; and Ameir, 3; in the home she inherited from her grandmother and shares with her husband, Lalu, and mother-in-law, Barbara.

Hicks got her start in child care babysitting for a neighbor's grandchildren when she was still a kid herself, and today she operates a certified family day care out of her house.

She praises King's walkability, its calm and its close proximity to parks where her day care kiddos can run their energy out. Her street — and the neighbors living on it — hasn't changed too much over the decades, though things definitely feel quieter than they were when Hicks was growing up.

"There were a lot more kids," she recalls. "We used to play softball on the corner and stay out till the streetlights came on."

eat here

For filling breakfast staples without the wait, **Fuel Cafe** on restaurant-filled Northeast Alberta Street is a go-to family spot, but don't overlook the culinary delights dotting Martin Luther King Jr. Boulevard, particularly between Shaver and Fremont streets. There, you'll find a rich spread of restaurants and carts serving up everything from authentic, family-friendly West African staples at **Akadi PDX** to a rotating menu of scrumptious soul food classics served up in portions hefty enough to feed a crowd at **Kee's Loaded Kitchen**. (Neighborhood kids go especially nuts for the coconut layer cake.) Be sure to hit Kee's early in the day, though: This fare sells out fast!



ERIN J. BERNARD

— Erin J. Bernard

SUPPORTING LOCAL BLACK-OWNED BUSINESSES

Sugar Street Bakery just might be the "Portlandiest" cupcake shop around. Its Insta-worthy treats are named after Portland streets — for instance, the uber-chocolate cupcake is called the Naito Parkway. **Bonus:** Sugar Street gives out free lunches to kids in need. Sugarstreetbakery.com.

If Baby needs a new pair of shoes, check out the ingenious convertible system from **Ozznek Shoes**. Dreamed up by a local mom tired of throwing out kids' shoes before they were worn out, the set comes with two different styles of shoe top (like metallic loafers and fur-lined boots) that peel and unpeel from one shoe sole base. All shoes available for children 10 months to 5 years old. Ozznekshoes.com.



Turn your home into a green oasis with cool, modern planters, macramé hanging pots and natural-fiber baskets from **EcoVibe Home**. Ecovibestyle.com.

Like Dat Apparel in the Foster-Powell neighborhood sells Black Lives Matter gear and can do custom screen-printing work, too. This shop, which features a large Black Lives Matter sign in the window, has been the target of recent racially motivated vandalism. Likedatapparel.com.

Amalfi's, an Italian family restaurant run by a Black mom, added a stunning mural to its outside wall this year: an updated picture of Rosie the Riveter. Give Rosie a shoutout when you pick up some manicotti and lemon-berry mascarpone cake for takeout. Amalfisrestaurant.com. — D.C.

GREATSCHOOLS.ORG:

Ratings aren't the whole story

In their quest for the best education possible for their children, parents may find ratings services to be a good way to quickly judge a school.

But those simple numbers may hide a more complex truth.

Take, for example, Scott Elementary School on Northeast Prescott Street in the Cully neighborhood. Is it a “good” school?

It depends on what information you rely on, and what experiences you value.

According to *GreatSchools.org* — the popular ranking site used by real estate professionals and Googlers across the nation — Scott Elementary is not a good school, earning just 1 out of 10 possible points.

But, Scott principal Megan McCarter says, relying only on *GreatSchools.org* data to make that call would be a mistake.

“I’m a very data-minded individual. I think tests and data are super important,” says the former math teacher. “I also think they’re not the whole story.”

Scott’s faculty loves the school so much that they stick around for years, McCarter says, and the Parent Teacher Association has won awards for its inclusive membership and outstanding programming.

GreatSchools.org relies heavily on statewide standardized test data for its rankings. The tests are offered in English and have been criticized for cultural bias.

While Scott’s Smarter Balanced Assessment Consortium (SBAC) scores are low, McCarter says their quarterly tests — which can be offered in Spanish — show the school is in the middle of the pack nationwide for student growth. Nearly a third of students at the dual-language school do not speak English as their first language.

“In such a white city, we have a really diverse school,” McCarter adds, noting a special focus on racial equity and a social-justice curriculum. Learning how to work and play with people from a wide range of backgrounds, she says, is an “invaluable experience, especially when you are growing up in a city that is so white.”

A 2019 research paper found that the increasingly widespread use of *GreatSchools* rankings could be accelerating racial segregation at schools. After the website attached ratings to schools, the racial and wealth gaps between higher- and lower-rated schools widened.

McCarter points out that many of the written reviews on Scott’s *GreatSchools.org* page are glowing. She says that just goes to show that parents hunting for the right school should look beyond the number.

“I would say do your research,” she says. “Talk to the principal. Go to the school.”
— Shasta Kearns Moore



Continued from page 11

The Portland Montessori School

The Portland Montessori School offers high-quality Montessori programming for children ages 15 months to 12 years-old. Visit our website for more information, and to schedule your personal admissions call.

205 NE 50th Ave
Portland, OR 97213
503-688.2992

info@portlandmontessori.org
portlandmontessori.org



St. Rose School

St. Rose School

Situated in the heart of Northeast Portland, St. Rose School helps raise saints and scholars in a small community centered on Catholic faith and values. We provide a comprehensive education that includes art, music, PE and much more, helping to form lifelong learners who respect others and serve their community. Grades offered: PK-8.

5309 NE Alameda St.
Portland, Oregon 97213
503-281-1912

info@strosepx.org
strosepx.org

Agia Sophia Academy - asapdx.org

A Renaissance School of Arts and Sciences - renpx.org

Bridges Middle School - bridgesms.org

Cedarwood Waldorf School - cedarwoodschool.org

Franciscan Montessori - fmes.org

French American - faispx.org

International Leadership Academy - ilapdx.org

The International School - intlschool.org

Tucker Maxon School - tuckermaxon.org

L'Etoile French Immersion School - letoilefrenchschool.com

Park Academy - parkacademy.org

Thomas A. Edison High School - edisonhs.org

PUBLIC/CHARTER SCHOOLS

Portland Village School

Portland Village School is a public, Waldorf, K-8 charter school, enlivening academics with music, art, drama, movement, language, and

handwork for students from all backgrounds and cultures.

7654 N Delaware Ave.
Portland, Oregon 97217
503-445-0056

admissions@portlandvillageschool.org,
portlandvillageschool.org

Riverdale School District

Comprising Riverdale Grade School (K-8) and Riverdale High School (9-12), Riverdale School District is an independent public school district that serves more than 600 families.

11733 S Breyman Ave.

Portland, OR 97219

503-262-4847

enrollment@riverdale.k12.or.us,

riverdaleschool.com/enrollment



MLA K-8 Public Charter School

MLA will provide a safe and enriching learning environment where the whole student is nurtured and developed, while supporting the academic and emotional wellbeing of each and every student.

22565 NE Halsey St.
Fairview, Oregon 97024

jlindenthal@mla.k12.or.us,
mla.k12.or.us

3240 S. Troutdale Rd.
Troutdale, Oregon 97060

TUTORING/ EDUCATION SERVICES

Math Gamers®

Have Fun With Math! We've adapted! We now have: Engaging and interactive VIRTUAL math activities, including CREATIVE PROBLEM-SOLVING using our home environments! (gr 1-5). Students create "Math Art" each week

23935 SW Casacara Ter
Sherwood, OR 97140
503-880-4988

kc@mathgamers.net,
www.mathgamers.net

Oregon Connections Academy -
oregonconnectionsacademy.com

Successful Learning Educational
Services, LLC - successfullrng.com

FAMILY FUN

ADVENTURE ATTRACTIONS

2020 PARENT PICKS

iFLY Indoor Skydiving

Lumberyard Bike Park

Mt. Hood Adventure Park at Skibowl

Pumpkin Ridge Zip Tour

Skamania Lodge Zipline Tour
& Aerial Park

Stronger Skatepark

Tree to Tree Adventure Park

FARMS

Triskelee Farm - triskeleefarm.com

Baggenstos Farm - baggenstosfarms.com

Bella Organic Farm - bellaorganic.com

Columbia Farms U-Pick -
columbiafarmsu-pick.com

Corn Maize at the Pumpkin Patch -
portlandmaze.com

Draper Girls Country Farm -
drapergirlscountryfarm.com

Duyck's Peachy-Pig Farm -
peachypigfarm.com

Fazio Farms - faziofarms.com

Fir Point Farms - firpointfarms.com

Flower Farmer - flowerfarmer.com

French Prairie Gardens - fpgardens.com

Hillside Blueberries -
hillsideblueberries.com

Hood River Organic UPick -
hoodriverupickcherries.com

Lee Farms - leefarmsoregon.com

Moonridge Farms - moonridgefarms.com

Olson Farms - olson-farms.com

Plumper Pumpkin Patch and Tree Farm -
plumperpumpkins.com

Rowell Bros. Berry Farm -
rowellbros.com

Sauvie Island Farms -
sauvieislandfarms.com

Smith Berry Barn - smithberrybarn.com

Topaz Farm - topazfarm.com

Wooden Shoe Tulip Farm -
woodenshoe.com

Zenger Farm - zengerfarm.org

City Guide Listings continue on page 18

VISITWORLD OF SMILES.COM

WORLD OF SMILES

Pediatric Dentistry





Southeast: Sellwood-Moreland Neighborhood



live here

\$685,000

Median home price

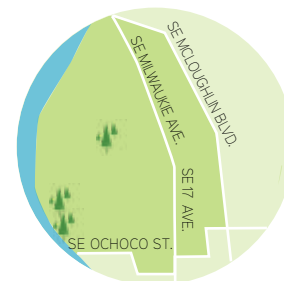
\$526,400

Median home value

\$1,693

Average rent for a 2-bedroom apartment

SOURCES: REDFIN, ZILLOW AND ZUMPER



Sellwood-Moreland in Southeast is the quintessential, walkable, self-contained Portland neighborhood. (It's also known as Sellwood-Westmoreland.) With grocery, hardware, book and toy stores, a pediatrician's office, restaurants and bakeries galore, one of Portland's most popular nature playgrounds, and even an amusement park all in the neighborhood, you'll hardly ever have to leave. It's no wonder the neighborhood is extremely popular with families and homes for sale are in high demand.

Sellwood-Moreland resident Ali Wilkinson loves the neighborhood's combination of a small-town feel and its proximity to urban amenities. "We know our neighbors, and can send our kids out to bike ride with their friends (just like the '80s!), but can get to downtown in 15 minutes in traffic," says Wilkinson, who has three school-aged children. "It's also very walkable. No matter where you are, you can get to a grocery store, library or hardware store within a mile. Our elementary school [Llewellyn] is solid and filled with totally dedicated and fabulous teachers, although I wish class sizes were smaller." Wilkinson's family also looks forward to the annual Monster March the weekend before Halloween. "Kids (and grown-ups) dress up and march from Llewellyn Elementary School around downtown Westmoreland while neighbors and businesses throw candy," she says. Wilkinson also acknowledges the neighborhood's downsides: It lacks diversity and its popularity is making it increasingly expensive to buy or rent in the area.

get around



46

Transit score



81

Walk score



95

Bike score

SOURCE: WALK SCORE





play here

No matter the season, kids love the nature playground at **Westmoreland Park**, which is equally famous for the Canada geese that call the park home. In the summer (when it's not a pandemic), Portland Parks and Recreation's **Sellwood Pool** and the 95-year-old **Oaks Amusement Park** draw families in droves. (And when pools were closed because of COVID-19, the Willamette River access from **Sellwood Riverfront Park** proved a great place to cool off on hot days.) And just in time for the rainy season, the retro **Moreland Theater** recently reopened for private screenings. While Sellwood is home to many



antiques stores, several family-oriented shops also line Southeast 13th and Milwaukie avenues, including The Bull and the Bee, Wallace Books and Oodles 4 Kids toy store. (And the Columbia Sportswear outlet store is a great place to snag raging deals on kids' rain gear.)

eat here

Sellwood-Moreland residents have a huge range of family-friendly restaurant choices along the main thoroughfares. Here are just a few favorites. The ribs and brisket are not to be missed at **Reverend's BBQ**. And kiddos dig the BBQ-chip-topped mac 'n' cheese, too. OG breakfast eatery **Fat Albert's** turns out fluffy pancakes and huge omelets with hash browns. Get your pastry fix at old standard **Grand Central Bakery** and newcomer **Communion Bakehouse** (follow them on IG and prepare to drool). And newbie **Holler** is part of Portland's fried-chicken craze — see more on page 25.



— Denise Castañon



PDXPARENT PICKS Nominees for 2021



Vote for your favorite family-focused people, places and spaces in the Portland metro area. Here are the nominees for favorite **PEDIATRICIAN**. Vote for the full list of categories at pdxparent.com/vote.

NOMINEES:

Broadway Medical Clinic, LLP

The Children's Clinic

Metropolitan Pediatrics, LLC

OHSU Doernbecher Pediatrics Clinic

Oregon & Clackamas Pediatrics

Pediatric Associates of the Northwest

Sellwood Medical Clinic

Sunset Pediatrics

PORTLAND JEWISH ACADEMY

INFANT THROUGH 8TH GRADE

PJA is an inclusive Jewish community school currently offering robust online learning in Kindergarten through 8th grade and in-person programs in our Early Childhood Department.

PJA empowers students to be flexible, innovative learners in a caring, supportive community.

Inquire Today!
pjaproud.org

2021 PARENT PICKS NOMINEE

THINK YOURSELF WORK THE WORLD

PORTLAND JEWISH ACADEMY PJA



Now taking applications for the 2021-2022 school year.



MLA

MLA K-8 Public Charter School

MLA will provide a safe, caring, learning community that allows children to reach their educational and personal potential while nurturing their self-confidence.

TUITION FREE

Elementary Campus:
 22565 NE Halsey St. Fairview OR 97024
 503-405-7868

Middle School Campus:
 3240 S. Troutdale Rd. Troutdale OR 97060

www.mla.k12.or.us

donating breastmilk is #adorbs!



Join local mothers who lovingly donate their milk to NW preemies!

To learn more about milk donation, visit our website at: donatemilk.org or call us at: 800-204-4444

Bennett Suzuki Violin Studio

Online Lessons
 AGE 2 to ADULT

Private lessons
 Group lessons
 Parent/child lessons*
 "at no extra cost"

Edie Bennett
 Certified Teacher • Masters Degree
 35 years teaching experience

bennettviolin@gmail.com
 503-246-9945
www.ediebennett.com

Continued from page 15

MUSEUMS & LIBRARIES

2020 PARENT PICKS

End of the Oregon Trail Interpretive & Visitor Information Center

Evergreen Aviation and Space Museum

Lan Su Chinese Garden

Oregon Historical Society

OMSI - Oregon Museum of Science & Industry

Oregon Zoo

Portland Art Museum

Portland Children's Museum

Rice Northwest Museum of Rocks and Minerals

Clackamas County Library - clackamas.us/lib/

End of the Oregon Trail Interpretive Center - historicoregoncity.org

Evergreen Aviation & Space Museum - evergreenmuseum.org

Fort Vancouver Regional Library District - fvrl.org

Haggart Astronomical Observatory - clackamas.edu/campus-life/campuses-buildings-hours/haggart-observatory

Historic Belmont Firehouse - friendsofportlandfire.org

The Lincoln Street Kayak & Canoe Museum - traditionalkayaks.com

Mercy Corps Action Center - mercy corps.org

Multnomah County Library - multcolib.org

Museum of the Oregon Territory - clackamashistory.org

Oregon Historical Society - ohs.org

Oregon Jewish Museum and Center for Holocaust Education - ojmche.org

Oregon Maritime Museum - oregonmaritimemuseum.org

Oregon Rail Heritage Center - orhf.org

Pacific Northwest College of Art - pnca.edu

Portland Institute of Contemporary Art - pica.org

Portland Police Historical Museum - portlandpolicehistoricalmuseum.com

Portland Puppet Museum - puppetmuseum.com

Rice Northwest Museum of Rocks and Minerals - ricenorthwestmuseum.org

Rose City Astronomers - rosecityastronomers.org

Washington County Library - wccils.org

Wells Fargo History Museum - wellsfargohistory.com

World Forestry Center Discovery Museum - worldforestry.org

NATURE PLAY AREAS

Blue Lake Regional Park - oregonmetro.gov

Broughton Beach - oregonmetro.gov

Camille Park - thprd.org

Canemah Bluff Nature Park - oregonmetro.gov

Cooper Mountain Nature Park - thprd.org

Engleman Park - wilsonvilleparksandrec.com

Howell Territorial Park - oregonmetro.gov

Hyland Woods Natural Area - thprd.org

Ibach Park - tualatinoregon.gov

Jorgenson Woods Neighborhood Park - clark.wa.gov

Jurgens Park - tualatinoregon.gov

Mason Hill Park - oregonmetro.gov

Mount Talbert Nature Park - oregonmetro.gov

Nadaka Nature Park - friendsofnadaka.org

Oxbow Regional Park - oregonmetro.gov

Pioneer Park - thprd.org

Pioneer Park Natural Play Area - ncprd.com

Roger Tilbury Memorial Park - thprd.org

Scouters Mountain Nature Park - oregonmetro.gov

Silver Falls State Park - oregonstateparks.org

Spring Garden Park - portlandoregon.gov

Trillium Creek Park - ncprd.com

ZOOS, WILDLIFE & ANIMAL EXHIBITS

The Audubon Society of Portland - audubonportland.org

Blue Lake Regional Park - oregonmetro.gov

Camassia Nature Preserve - westlinnoregon.gov

Columbia River Renaissance Trail - cityofvancouver.us

Cooper Mountain Nature Park - thprd.org

Elk Rock Island - milwaukieoregon.gov/parkssustainability/elk-rock-island

Graham Oaks Nature Park - oregonmetro.gov

Jackson Bottom Wetlands Preserve - jacksonbottom.org

Kelley Point Park - portlandoregon.gov
 Magness Memorial Tree Farm - worldforestry.org
 Marquam Nature Park - fmnp.org
 Powell Butte Nature Park - portlandoregon.gov
 Sauvie Island Wildlife Management Area - dfw.state.or.us
 Smith & Bybee Lakes Wetlands Natural Area - oregonmetro.gov
 Tualatin Hills Nature Park Interpretive Center - thprd.org
 Tualatin River National Wildlife Refuge - fws.gov/tualatinriver
 Whitaker Ponds Natural Area - portlandoregon.gov
 Wildwood Recreation Site - recreation.gov

HEALTH and WELLNESS

DENTIST/ ORTHODONTISTS FOR KIDS

2020 PARENT PICKS

Behind the Smile Dentistry for Children

Hi5 Dental Dentistry for Kids!

Hollywood Children's Dentistry

Little Smiles Pediatric Dentistry

Dr. Pike Dentistry for Children

Sprout Pediatric Dentistry
& Orthodontics

World of Smiles Pediatric Dentistry

Behind the Smile Dentistry for Children - behindthesmile.com

Great Grins for Kids - greatgrins.net

Must Love Kids Pediatric Dentistry - mustlovekids.com

Providence Specialty Pediatric Dental Clinic - providenceoregon.org

Tooth + Tusk - toothtusk.com

Under the Sea Dentistry for Children - undertheseakidsdentist.com

Vancouver Pediatric Dentistry - vancouverpediatricdentistry.com

Young Kidz Dental - youngkidzdental.com

Hollywood Children's Dentistry

Located in the historic Hollywood District in Northeast Portland, you will find our child-friendly dental office. We provide exceptional, comprehensive dental care from infancy through adolescence. 3839 NE Tillamook Street
 Portland, OR 97212
 503-288-5891
info@hcdpdx.com
www.hcdpdx.com



World of Smiles Pediatric Dentistry

World of Smiles Pediatric Dentistry has been making the greater Portland and Beaverton community smile since 2008. Dr. Michelle Stafford and her team are committed to inspiring children through a uniquely positive dental experience by creating an atmosphere of imagination, travel and adventure. Now serving kids, teens, and the young at heart. 11790 SW Barnes Rd Ste 280
 Portland, OR 97225
 503-626-9700
info@visitworldofsmiles.com,
visitworldofsmiles.com

PEDIATRICIANS

2020 PARENT PICKS

Broadway Medical Clinic, LLP

The Children's Clinic

Metropolitan Pediatrics, LLC

OHsu Doernbecher Pediatrics Clinic

Oregon & Clackamas Pediatrics

Pediatric Associates of the Northwest

Sellwood Medical Clinic

Sunset Pediatrics

Metropolitan Pediatrics

Metropolitan Pediatrics is a state-recognized Medical Home practice with nearly 50 providers and six locations, compassionately caring for Portland-area families since 1999. Call today for virtual or in-person care!

Multiple Locations
 833-739-5437
metropediatrics.com

Pediatricians continue on page 22

IN THE DEPTHS OF WINTER, THERE'S
LIGHT AT THE END OF THE TUNNEL!

Tucker Arts Camp 2021

June 28 - Aug 20

Ages 3 To 5th grade



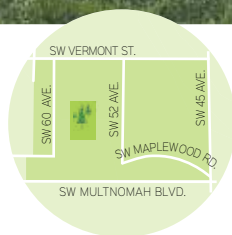
NOMINATED FOR BEST DAY CAMP
PDX PARENT 2021

TUCKERMAXON.ORG/TUCKERARTSCAMP



Southwest: Maplewood Neighborhood

Almost exclusively a residential neighborhood, Maplewood in Southwest Portland is unknown to many, but beloved by its residents. Sandwiched between Multnomah Village and Garden Home, this neighborhood has easy access to family-friendly resources and recreation, other Portland enclaves and tons of suburban amenities.



play here

Although a car is a near-necessity to leave the area, this less-than-1-square-mile neighborhood is regularly walked by its residents — rain or shine — often with strollers and four-legged friends in tow. Maplewood residents love its green spaces. The well-hidden **April Hill Park** is a neighborhood gem, with soccer fields, a play structure for young children and boardwalk access to Fanno Creek. There are no sidewalks, but a few “secret” paths called “snickets” wind through the neighborhood knolls, and the streets are dotted with **Little Free Libraries**. Just beyond the formal boundaries but still within walking distance is the 91-acre **Gabriel Park** and the **Southwest Community Center (SWCC)** to the west, and the **Garden Home Recreation Center** and **Fanno Creek Trails** to the east.



eat here

Built in 1911 as a post office and general store, **Maplewood Coffee & Tea** attracts local residents and visitors alike. In addition to breakfast and lunch, it offers seasonal dinners as well as beer and cider on tap. On Southwest Vermont Street just across from SWCC, **Driftwood Coffee** is owned by local Maplewood mom Kara Powell and offers a cozy atmosphere to enjoy a honey lavender or cardamom latte and shop for artisanal gifts. Although technically outside of Maplewood proper, across Southwest 45th Avenue is family-favorite **Laughing Planet**, just a few doors down from the locally owned **Sunny's Legendary Frozen Yogurt** — the first and only Oregon Kosher-certified fro-yo shop.

The Jones family has lived in Maplewood for nearly six years. They came mostly for the proximity to OHSU, and plan to stay for the close-knit community feel. They particularly like the nearby parks and schools, that their neighbors are friendly, and that (pre-pandemic) there are lots of opportunities for kids to meet and play together. David Jones says: "It's so walkable — not in the getting-anywhere sense — but there's such little traffic, it's basically insular from cars. I feel comfortable with my daughter walking to her friends' houses or school."



live here

\$551,165
Median home value

\$2,273
Median rent

SOURCE: ZILLOW



HEATHER JONES

get around



27
Transit score



34
Walk score



54
Bike score

SOURCE: WALK SCORE

— Joanna Close

SOUTH PORTLAND, WHAT'S IN A NAME?

On May 1, 2020, Portland got a new district: **South Portland**. Carved out of Southwest Portland, the long, tall area is bordered by the Marquam Bridge to the north, then runs down the waterfront to the Sellwood Bridge and west along Southwest Barbur Boulevard. The neighborhoods of South Waterfront, Corbett, Lair Hill, Terwilliger and Johns Landing make up the new sextant (or as some stubborn, math-be-damned Portlanders may say, "sixth quadrant"). The main reason for the addition of South Portland was to fix a pesky zero attached to the beginning of certain addresses in the area — and the headache it caused

for delivery drivers and, more important, emergency responders.

Jennifer Daneluk, Lair Hill resident and owner of neighborhood gathering spot **Ross Island Grocery & Cafe**, felt the name change was important despite some of the challenges it caused. "Our neighborhood is very unique in being one of the oldest and the newest neighborhoods in Portland," says Daneluk. "Its long and rich history deserves a nifty, new name."



JENNIFER DANELUK



Daneluk, who also serves on the South Portland Neighborhood Association, worked on the committee to celebrate the new name, but COVID-19 quashed the plans for a large outdoor concert with food and goodies donated from local businesses to introduce Portland to the boundaries of the new quadrant.

Still, residents do feel there is a lot to celebrate about the area that's dotted with green spaces such as Elizabeth Caruthers Park and many beautiful Victorian homes. Daneluk's neighbor Kecia Welt loves the neighborhood's walkability. "South Portland is the best neighborhood for walking along the river or hiking up to Council Crest," says Welt. "I can walk to Hillsdale or walk to Northwest, the Pearl or Southeast in less than an hour."

For Daneluk, it's her neighbors. "My favorite thing about this neighborhood is its strong sense of community. Day after day we come together and support each other through this unprecedented challenge. It makes me very sure that South Portland is a great place to live." — D.C.

Music Together. of Portland

Contact
us to visit a
class!



Discover the power
of family music-making.

Virtual, for now... Sing, dance, and play at home!
www.musictogether-pdx.com • (503) 236-4304

Continued from page 19



Sellwood Medical Clinic

Sellwood Medical Clinic offers the highest standard of medical care, in a friendly and welcoming environment. We're confident you'll find comfort in placing your medical needs in our hands.

8332 SE 13th Avenue
Portland, Oregon 97202

6234 N Greeley Avenue
Portland, Oregon 97217

503-595-9300
admin@sellwoodmd.com
www.sellwoodmd.com

Adventist Medical Center -
adventisthealth.org

Brave Care - bravecare.com

Evergreen Pediatric Clinic -
evergreenpediatrics.com

Metropolitan Pediatrics, LLC -
metropediatrics.com

OHSU - ohsu.edu

Oregon City Pediatrics - ocpeds.com

Pediatric Associates of the Northwest -
portlandpediatric.com/

Sellwood Medical Clinic -
sellwoodmd.com

Vilhauer Rosenberg Pediatrics -
vrpediatrics.com

Westside Pediatric Clinic -
westsidepediatrics.com

WOMEN'S SERVICES

Surro Connections

Surro Connections is a surrogacy agency looking for intended parents and/or gestational surrogates who are interested in this journey of creating a miracle to help grow a family.

12826 NE Airport Way
Portland, OR 97230
503-489-5067

info@surroconnection.com
surroconnections.com

OHSU Center for Women's Health -
ohsuwomenshealth.com



All Families Surrogacy

All Families Surrogacy, LLC, is a compassionate and thriving gestational surrogacy agency based in Oregon, and recipient of the 2017 Better Business Bureau's Business of the Year Award. Our team -- comprised mostly of experienced surrogates -- has a passion for helping to create loving families of all kinds.

12725 SW Millikan Way
Beaverton, Oregon 97005
503-906-7960

marketing@allfamiliesurrogacy.com,
www.allfamiliesurrogacy.com

LESSONS and CAMPS

ARTS & CRAFTS CLASSES/CAMPS

2020 PARENT PICKS

Children's Healing Art Project (CHAP)

Cognizant by MetroArts Inc.

Gilchrist Art Camp

Grace Institute

Home of Grace Art Camps

Portland Craft Bar

Spark Arts Center

Tucker Maxon School

Willowbrook Arts Camp

Tucker Arts Camp

Tucker Arts Camp is a 2021 PDX Parent Picks Nominee for Best General Day Camp! We look forward to welcoming kids back this summer with music, dance, art and culture!

2860 SE Holgate Blvd
Portland, OR 97202
503-235-6551

john.aney@tuckermaxon.org
www.tuckermaxon.org

The Portland
Montessori School

**Now Enrolling
for In-Person
Care**

Toddler (15 - 30 months)
Primary (3 - 6 year olds)
Elementary (Grades 1-6)

portlandmontessori.org

A K-8 public Waldorf
charter school,
developing
the head, heart
and hands of
all children

**PORTLAND
VILLAGE
SCHOOL**

Please visit
our website for
our Virtual Tour
& Open House
schedule

www.portlandvillageschool.org
7654 N Delaware Ave, Portland 97217
503-445-0056

CLIMBING/OBSTACLE CLASSES/CAMPS

2020 PARENT PICKS

Circuit Bouldering Gym
Forge Parkour
Planet Granite
Portland Rock Gym
Skyhook Ninja Fitness
Stoneworks Climbing Gym

DANCE CLASSES/CAMPS

2020 PARENT PICKS

BodyVox Dance
Center for Movement Arts
ENCORE Performing Arts Center
June Taylor's School of Dance
NW Dance Project
Oregon Ballet Theatre
The Portland Ballet
Portland Dance Center
Westside Dance & Gymnastics Academy

BodyVox Dance - bodyvox.com
Dance With Joy Studios -
dancewithjoystudios.com
NW Dance Project -
nwdanceproject.org
Oregon Ballet Theatre -
obt.org
The Portland Ballet -
theportlandballet.org
Westside Dance & Gymnastics Academy
- westsideacademy.com

GENERAL DAY CAMPS

2020 PARENT PICKS

Hillsboro Parks & Recreation
Lake Oswego Parks & Recreation
Mittleman Jewish Community Center
North Clackamas Parks & Recreation
Department
Portland Parks & Recreation
Trackers Earth
Tualatin Hills Parks & Recreation District
Tucker Maxon
YMCA of Columbia-Willamette

Camp Tilikum - camptilikum.org
Catlin Gabel School -
catlin.edu
Girls Build - girlsbuildpdx.org

Junior Achievement of Oregon and
SW Washington - jaorswwa.org

Trinity Lutheran Christian School -
trinityportland.org

GYMNASTICS CLASSES/CAMPS

2020 PARENT PICKS

The Children's Gym
The Circus Project
Echo Theater Company
OMEGA Gymnastics
Oregon Gymnastics Academy
Westside Dance & Gymnastics Academy

HORSE/ANIMAL CLASSES/CAMPS

2020 PARENT PICKS

French Hill Riding Academy
Herrold Stables & Farm
Horse Sense Riding School
Old McDonald Farm, Inc.
Once Upon a Horse
Oregon Horsemanship
Oregon Humane Society
Oregon Zoo
Royal Ridges

INCLUSIVE CAMPS

2020 PARENT PICKS

B'nai B'rith Camp
Camp Meadowood Springs
Camp Yakety Yak
Mt. Hood Kiwanis Camp
Tucker Maxon School
Upward Bound Camp

OVERNIGHT CAMPS

2020 PARENT PICKS

Big Lake Youth Camp
Camp Namanu
Camp Tillikum
Camp Two Roads
Camp Tamarack

Lesson and Camps continue on page 26



503-880-4988 • kc@mathgamers.net
www.mathgamers.net

Have Fun With Math!

Engaging and interactive
VIRTUAL math activities, including
CREATIVE PROBLEM-SOLVING using our
home environments! (gr 1-5)

Students CREATE
"Math Art" each week!

Proud to be a
STEM partner.

PDX PARENT PICKS
VOTE
2021
READERS' CHOICE AWARDS



Follow Your Curiosity

Engaging summer camps, classes & internships
(online & in-person) for students in grades 2-12 in
science, tech, engineering, math and the arts!

Tuition Assistance is available

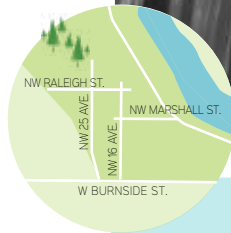
visit our website for more information
saturdayacademy.org

saturday academy
in collaboration with University of Portland

PDX PARENT PICKS
NOMINEE
2021
READERS' CHOICE AWARDS

Northwest: The Alphabet District

Long before the Pearl District became a thing, the historic Alphabet District, specifically Northwest 23rd Avenue and its adjacent streets, was the city's go-to upscale shopping and dining destination. And it still shines on those fronts. Locals also praise the area's gorgeous vintage buildings, prime walkability, and easy MAX and bus access. The neighborhood, also called the Northwest District, offers great parks, schools, grocery stores and other amenities, including Legacy Good Samaritan Medical Center. Roughly bound by Northwest 25th and 16th avenues and West Burnside Street, the Alphabet District is adjacent to the Pearl District to the east, downtown to the southeast and the vast, wooded playground that is Forest Park to the west, putting residents in the heart of what makes Portland tick.



Parents in the Alphabet District love being close to the library, parks, stores, downtown and restaurants. Sophie Fauveau, originally from France, has lived in the area since 2000 and is the mom of two 10-year-olds and an 8-year-old. She loves that her kids can play right on the sidewalk among the bustling life of the city: "I like the European feel of the neighborhood and that walking to the store and lugging back our groceries is normal for my kids." Another perk: "We almost never use our car." Anna Dvortcsak, a mother of twin 10-year-olds, also praises the neighborhood's vibe: "We love the proximity to school [and] walkability for parks, restaurants, and even the doctor and dentist." The one neighborhood con, she says: parking.



live here

\$568,000
Median home value

\$2,485
Average rent
for a 2-bedroom apartment

SOURCES: REALTOR.COM AND ZILLOW

get around



65
Transit score



97
Walk score



96
Bike score

SOURCE: WALK SCORE

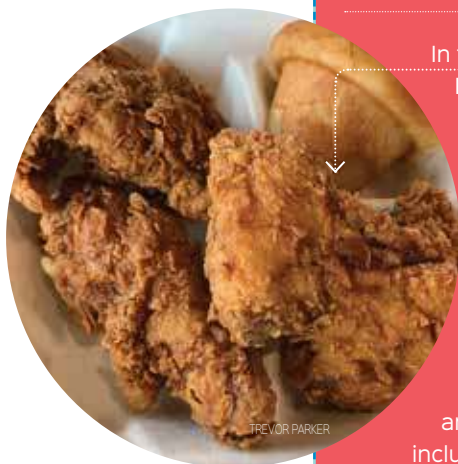
play here

The Alphabet District is just a few blocks from the base of 5,200-acre **Forest Park**, the country's largest urban forest, which boasts more than 80 miles of trails and forest roads for hiking, biking and running. **Couch Park** on Northwest Glisan Street and **Wallace Park** on Northwest 25th Avenue and Raleigh Street (next to Chapman Elementary) both offer playgrounds, sport courts and fields, and dog parks.



eat here

The Alphabet District offers everything from the upscale **RingSide**, a steakhouse with impeccable onion rings and killer filet mignon, to the quintessential pizza joint for ready-to-eat slices, **Escape From New York Pizza**. Other favorites include **Kornblatt's Deli** for bagels and sandwiches and **Santa Fe Taqueria** for burritos and tacos.



— Sarah Vanbuskirk

PDX TREND: FRIED-CHICKEN GOODNESS

From downtown to the 'burbs, Portlanders of all ages are reaching for another piece of the ultimate comfort food: crispy-crunchy chicken. All fried-chicken joints mentioned below are open for takeout.

Bonchon, a chain from South Korea that recently moved in at **Clackamas Town Center**, tosses its chicken (tenders, wings or



boneless wings) in one of two sauces: spicy or soy-garlic. The spicy is pleasantly hot. The soy-garlic is delicious, too, and also great for dunking potstickers in. Don't miss the sweet pickled radishes or the creamy sesame-sriracha dipping sauce that

comes with the onion rings! "This is the best fried-chicken place ever," declared my 5-year-old son, Cruz. Bonchon.com.

For a Nashville-style hot-chicken sandwich, head to **Basilisk in The Zipper on Northeast Sandy Boulevard**. The housemade pickles are heavenly. **Pro tip:** You can order chicken without the super-spicy sauce, and they have outdoor seating when allowed. Basiliskpdx.com.

In the Southwest 'burbs near **Washington Square Mall**, **Ezell's Famous Chicken** lives up to the hype. **Pro tip:** Its sides could be a meal on their own! The rolls, mac 'n' cheese, baked beans and potato salad are kid-approved. Ezellschicken.com.

The **Sellwood-Moreland neighborhood** is now home to two fabulous fried-chicken joints: Baes and Holler. **Baes**, which also has a location in **downtown**, offers strips, sandwiches and pieces, and a number of kid-friendly sides like buttered corn and waffle fries. It also offers a family meal, which includes a whole fried chicken and up to four different sides. Meanwhile, **Holler** specializes in fried chicken wings, pieces and sandwiches, but also has burgers and meatloaf sandwiches on the menu, along with cornbread, cookies and housemade ice cream. — D.C.



RIVERDALE

Teaching students to be thoughtful in their education, about each other, and for their community.

Visit our website for enrollment information:

- Explore virtual tours of the grade school and high school
- Spaces available for 2021-22 in Kindergarten, 1st grade and 9th-12th grade

Enrollment requests due Feb. 19
riverdaleschool.com/enrollment

503-262-4847 • www.riverdaleschool.com
 Grade School • 11733 S Breyman Ave., Portland
 High School • 9727 SW Terwilliger Blvd., Portland



Sunshine Montessori school

Since 1995
Owner operated

We Offer

- ❖ Infant, (Only At Mayflower) Toddler, Preschool, all day Kindergarten programs.
- ❖ Open from 6.30AM to 6.00PM (Mon to Fri)
- ❖ Meals prepared on premises.
- ❖ Weekly music classes.
- ❖ Large fenced play ground with Tennis (Sunshine only) Basketball and play structures.
- ❖ Gardening (Spring/Summer only)
- ❖ Qualified, caring, consistent Teaching staff

Sunshine Montessori school
 4840 NE Mayfield Blvd
 Beaverton, OR 97005
 Tel: (503) 644-2116
sunshine-montessori.com

Mayflower Montessori School
 17663 SW Alexander St.
 Aloha, OR 97006
 Tel: (503) 591-9600
mayflower-montessori.com

For your convenience in two locations

Continued from page 23

OUTDOOR ADVENTURE CLASSES/CAMPS

2020 PARENT PICKS

Audubon Society of Portland

Avid 4 Adventure

Boy Scouts of America

Friends of Tryon Creek

Mazama Wild Day Camp

Trackers Earth Portland

PERFORMING ARTS CLASSES/CAMPS

2020 PARENT PICKS

Broadway Rose Theatre Company

The Circus Project

Journey Theater

Northwest Children's Theater and School

Oregon Children's Theatre

Portland Metro Arts

School of Rock

SCIENCE/MATH CLASSES/CAMPS

2020 PARENT PICKS

Girls Count

iD Tech Camps

Mad Science of Portland and Vancouver

Math Gamers

OMSI - Oregon Museum of Science & Industry

Oregon Zoo

PJA Summer Discovery Program

Saturday Academy

Mad Science of Portland and Vancouver

Interactive, hands-on science fun delivered virtually! Mad Science has been providing exciting, engaging learning fun for more than 20 years in the Portland area, now available online!

1522 N. Ainsworth St
 Portland, OR 97217

(503) 2308040
info@madscienceportland.com
portland.madscience.org

Saturday Academy

Saturday Academy provides access to hands-on learning for diverse students in grades 2-12 in the areas of Science, Technology, Engineering, Arts, and Math (STEAM) with classes, camps, and internships.

503-200-5858

info@saturdayacademy.org,
saturdayacademy.org

SPORTS CLASSES/CAMPS

2020 PARENT PICKS

BaxterSports Camps

Jordan Kent's Just Kids Skill Camps

North Clackamas Parks and Recreation District

Portland Lil' Kickers

Portland Parks & Recreation

Rose City Futsal

Soccer Shots

Tualatin Hills Parks & Recreation District

Villa Sport Athletic Club and Spa

Portland Lil' Kickers - pdxlilkickers.com

Portland Parks & Recreation -
portlandoregon.gov/parks

Rose City Futsal - rosecityfutsal.com

Soccer Shots - soccershots.org/pdx

Tualatin Hills Parks & Recreation District -
thprd.org

North Clackamas Parks and Recreation District -
ncprd.com

PROFESSIONAL SERVICES

LEGAL SERVICES

Aiston Law, LLC - aistonlaw.com

Fitzwater Law, LLP - fitzwaterlaw.com

Gearing, Rackner & McGrath, LLP -
grmfamilylaw.com

Gevurtz Menashe Family Law -
gevurtzmenashe.com

Kohlhoff & Welch, Attorneys at Law,
 A Mother Daughter Partnership -
northportlandattorney.com

Laidlaw & Laidlaw, Attorneys at Law -
laidlawandlaidlaw.com

Lori A. Bonnier LCSW LLC -
childfocused.net

Pekelder Family Law, PC - pekelderlaw.com

Penoyer Law - penoyerlaw.com

Trainor Law LLP - trainorlawpc.com
Wyse Kadish LLP - wysekadish.com
Yellow Dog Legal - yellowdoglegal.com

FAMILY SERVICES

Albertina Kerr

Kerr provides essential, life-saving care for children and teens facing mental health challenges and individuals experiencing intellectual and/or developmental disabilities — helping them to survive, thrive, and lead fulfilling lives.

503-239-8101

info@AlbertinaKerr.org,
AlbertinaKerr.org

21info - 21info.org

Attachment Parenting of Portland -
attachmentparenting.org

Baby Blues Connection -
babybluesconnection.org

Clackamas Parenting Together -
clackamasparenting.com

Families with Children From China -
fcc-oregon.org

Human Solutions - humansolutions.org

Impact NW - impactnw.org

La Leche League of Oregon -
lalecheleagueoregon.webs.com

Lake Oswego Mother's Club -
lomoms.com

MOPS (Mothers of Preschoolers) -
mops.org

Mother and Child Education Center -
momchildpdx.org

Neighborhood House - nhpdx.org

New Father's Meetup/Workshop -
samstevensmft.com

Nursing Mothers Counsel -
nursingmotherscounsel.org

Oregon Helps! - oregonhelps.org

Parents Anonymous of Oregon -
morrisonkids.org

Tuality Health Education Center -
tuality.org

Washington County Breastfeeding
Circles - co.washington.or.us

ACCESSIBLE & INCLUSIVE RESOURCES

2020 PARENT PICKS

Albertina Kerr's Children's
Developmental Health Services

Gather and Grow Pediatric
Occupational Therapy

Forward Strides

Hello Clinic

Northwest Dyslexia Learning Center

Northwest Family Services

Sensory Kids, LLC

Spectra Gymnastics

Therapy Solutions for Kids

Tucker Maxon School

Albertina Kerr Hearing Services -
albertinakerr.org

The Arc Oregon - thearcoregon.org

CHADD - Children and Adults with
Attention-Deficit/Hyperactivity Disorder
- chadd.org

Children's Developmental Health
Services (Albertina Kerr) -
albertinakerr.org

Decoding Dyslexia Oregon -
decodingdyslexiaor.org

Disability Rights Oregon - droregon.org

The Dougy Center for Grieving Children
and Families - dougy.org

Down Syndrome Network of Oregon -
dsno.org

FACT Oregon - factoregon.org

HELP Elevate Learning Processing, Inc.
(HELP) - helpadd.org

Me, Too Grief Support Groups -
oregonhospice.org

Oregon Family Support Network -
ofsn.org

Portland Aspergers Network -
pdxaspergers.org

RISE Services Inc - riseservicesinc.org

Swindells Resource Center -
[oregon.providence.org/our-services/s/
swindells-resource-center/](http://oregon.providence.org/our-services/s/swindells-resource-center/)

UCP Disability Services - ucporegon.org

PREGNANCY and BABY

FERTILITY & SURROGACY RESOURCES

2020 PARENT PICKS

All Families Surrogacy

Northwest Fertility Center

OHSU Center for Women's Health

Oregon Fertility Institute

ORM Fertility

Surro Connections

Pregnancy and Baby continue on page 30



all families surrogacy

dfs

Become a surrogate!

Earn \$45,000+ by helping to create a family.

Now offering a \$500 signing bonus!

877-769-9985

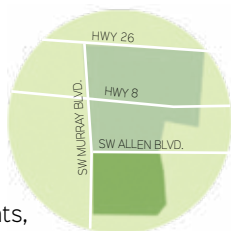
www.allfamiliesurrogacy.com

Visit pdxparent.com
for parenting resources,
guides, articles
and ideas on how to
have fun with kids
in the Pacific
Northwest.

The 'burbs: Highland Neighborhood



There's much to celebrate in Beaverton's Highland neighborhood. Residents enjoy ample parks and nature areas, as well as close proximity to restaurants, shops and the Nike campus. From the Beaverton Transit Center, the Red and Blue MAX lines offer a 30-minute trip to downtown Portland. And the city of Beaverton has taken on the goals of cultural inclusion, public safety and long-term livability. Its progress has been noted by the National Civic League and *livability.com*, which ranked Beaverton the No. 3 Best Place to Raise a Family in the U.S.



"We live in Hyland Hills and have such a wonderful block of humans. Block parties, neighbor gatherings ... (pre-pandemic) we had soup nights where everyone brings a favorite. We'd gather at the bistro table in the front yard of Mr. Nader, our 80-year-old Iranian neighbor, on summer evenings, bringing the party to him."
— Carli Schultz, Highland resident and mom to an 11-year-old son.

get around



36
Transit score



42
Walk score



66
Bike score

SOURCE: WALK SCORE

play here

Highland families have a multitude of close-by choices when it comes to green spaces to romp through. Residents can hit **Hyland Forest Park**, the paved **Fanno Creek Greenway Trail** or the skate park at **Evelyn M. Schiffler Memorial Park**. And nearby in central Beaverton, the **Beaverton Farmers Market** is a paradise where foodie families can pick up fresh veggies along with artisan cheeses, breads and more. And the city of Beaverton also hosts a number of events, including **Welcoming Week**, slated for September 10-19, 2021. Welcoming Week, which includes the popular **Beaverton International Festival**, is a way to celebrate diversity and to connect refugees, immigrants and those born in the United States.



live here

\$385,900

Median home value
in Highland

\$1,465

Median rent in Beaverton
for a two-bedroom
apartment

SOURCES: ZILLOW AND ZUMPER

eat here

On Southwest Allen Boulevard, **Ikenohana** serves up outstanding sushi and tempura. Or, farther east on Allen, go for the boss grilled chicken at **El Jefe Mexican Grill**. The carne asada tacos and fresh salsa aren't to be missed, either! Both restaurants have offered takeout during the pandemic.



— Denise Castañon



PDXPARENT PICKS Nominees for 2021

Vote for your favorite family-focused people, places and spaces in the Portland metro area. Here are the nominees for favorite **GYMNASTICS CLASSES/CAMPS**. Vote for the full list of categories at pdxparent.com/vote.

NOMINEES:

- The Children's Gym
- The Circus Project
- Echo Theater Company
- OMEGA Gymnastics
- Oregon Gymnastics Academy
- Westside Dance & Gymnastics Academy



Continued from page 27

HOSPITALS & BIRTH CENTERS

2020 PARENT PICKS

Alma Midwifery
Andaluz Waterbirth Center
Canyon Medical Center
Kaiser Permanente
Legacy Health
Midwifery Birth Center/Women's
Healthcare Associates
OHSU
Providence Health System

Women's Healthcare Associates -
whallc.com

OBSTETRICS & WOMEN'S HEALTH

2020 PARENT PICKS

A Balanced Life Health Care
A Woman's Time
Lake Oswego GYN

Northwest Women's Clinic
The Oregon Clinic
Synergy Women's Health Care
Woman's Healthcare Associates
Woman's Healthcare Clinic
of Oregon, P.C.

PREGNANCY & POSTPARTUM SUPPORT

2020 PARENT PICKS

Bridgetown Baby
Doula My Soul Lactation Services
Luna Lactation & Wellness
OHSU
Portland Doula Love
Providence St Vincents
Lactation Store

Alma Midwifery - almadmidwifery.com
Bridgetown Baby - bridgetownbaby.com
Luna Lactation & Wellness -
lunalactation.com

SHOPPING and SERVICES

BOOK/COMIC STORES

2020 PARENT PICKS

Annie Bloom's Books
A Children's Place Bookstore
Green Bean Books
Mudpuddles Toys & Books
Maggie Mae's Kids Bookshop
Powell's City of Books

Excalibur Comics

Portland's oldest and coolest comic shop for over 45 years! We specialize in back issues, graphic novels, hard to find gems! We have one of the largest all ages selections!

2444 SE Hawthorne
Portland, Or 97214
503-231-7351
excaliburcomicspdx@gmail.com
Excaliburcomicspdx.com

A Children's Place Bookstore -
achildrensplacebookstore.com

Annie Bloom's Books - annieblooms.com

Green Bean Books -
greenbeanbookspdx.com

Maggie Mae's Kids Bookshop -
maggiemaesbooks.com

Mudpuddles Toys & Books -
mudpuddletoys.com

CONSIGNMENT SHOPS/EVENTS

2020 PARENT PICKS

Beanstalk Children's Resale
Cloverdilly Kids
Hoot-N-Annie Children's Boutique
Just 4 Kids Consignment
Pass It On Sales
Piccolina Children's Resale Boutique
Super Kids Resale
Sweetpea's Resale



As one of the few schools in Oregon devoted to students with learning differences and the only one focused exclusively on middle school, Bridges offers its 5th through 8th grade students small class sizes, differentiated instruction, and a safe place to learn and grow.

Admission inquiries for the 2021/22 school year are now being accepted online at [BridgesMS.org](https://bridgesms.org). Space is limited. Preference given to 5th grade applicants.

You can find us in the heart of downtown at
2510 SW 1st Avenue
Portland, OR 97201
503-688-2922



Beanstalk Children's Resale

Grow and shop sustainably with Beanstalk! Your neighborhood resale store is has lots of options for your family, sizes preemie to youth 14. Shop in-stores or online at shopbeanstalk.com
3527 NE 15th Ave
Portland, OR 97212
8021 SE Stark St
Portland, OR 97215
503-477-7776
info@beanstalkpdx.com
beanstalkpdx.com

Baby Goods Consignment -
babygoodspdx.com

Baby to Baby Resale -
facebook.com/babytobabybeaverton/

Back on the Rack -
shopbackontherack.com

Denim & Frills Children's Resale Boutique - denimandfrills.com

Hoot-N-Annie Children's Boutique - hoot-n-annie.com

Katelyn's Closet - katelynsclosetpdx.com

Once Upon a Child - onceuponachildvancouverwa.com

Pass It On Sales - hillsboropassitonsales.com

Piccolina Children's Resale Boutique - piccolinaresale.com

Pipsqueak Resale Boutique - pipsqueakresale.com

Super Kids Resale - superkidsresale.com

Tiny Hyns Consignments New & Resale - tinyhyns.com

LOCAL NEW KIDS' CLOTHING

2020 PARENT PICKS

[Black Wagon](#)
[the Bull & the Bee](#)
[Grasshopper Store](#)
[Hanna Andersson](#)
[Le'D Bug Boutique](#)
[Mako The Childrens Shop](#)
[Posh Baby](#)

Black Wagon

From newborn to tween, Black Wagon has beautifully and carefully selected quality clothing, toys books, and shoes for the all the littles ones in your life!

3964 N Mississippi Ave
 Portland, OR 97227
 503-916-0000

carey@blackwagon.com
blackwagon.com



Beanstalk Children's Resale

Grow and shop sustainably with Beanstalk! Your neighborhood resale store is has lots of options for your family, sizes preemie to youth 14. Shop in-stores or online at shopbeanstalk.com

3527 NE 15th Ave
 Portland, OR 97212

8021 SE Stark St
 Portland, OR 97215

503-477-7776
info@beanstalkpdx.com
beanstalkpdx.com

TOY STORES

2020 PARENT PICKS

[Hammer and Jacks](#)
[Thinker Toys](#)
[Finnegan's Toys & Gifts](#)
[Piccolo Mondo Toys](#)
[Kids at Heart Toys](#)
[MudPuddles Toys & Books](#)
[Grasshopper Boutique](#)
[Bricks and Minifigs](#)

[Bricks & Minifigs](#) - bricksandminifigs.com

[Cloud Cap Games](#) - cloudcapgames.com

[Kazoodles Toys](#) - kazoodlestoy.com

[Lakeshore Learning](#) - lakeshorelearning.com

[MudPuddles](#) - mudpuddlestoy.com

SCHOOL OPEN HOUSES

School information	Date / time	Virtual or in person	Grades	Focus	Part of town
International Leadership Academy 503 662 8452 ilapdx.org	January 8, 9 pm	virtual	PreK, K, 1-5 6-8	French Immersion, Spanish	Lake Oswego
The International School 503-226-2496 intlschool.org	January 26, 7 pm April 24, 9 am	virtual	Prek, K, 1-5	IB, Language Immersion	S
Portland Jewish Academy 503-244-0126 pjaproud.org	Check website	virtual/ in person	PreK, K, 1-5, 6-8	Values-based Learning	SW
German International School 503-626-9089 gspdx.org	January 24, 10 am	virtual	PreK, K, 1-5	IB, Languege Immersion	Beaverton
Oregon Episcopal School 503-416-9367 oes.edu/infoevening	January 6, 7 pm RSVP	virtual	PreK, K, 1-5, 6-8, 9-12	Inquiry-Based Education	SW
French American International School 503-292-7776 ext 1310 faispdx.org/VirtualAdmissionsCenter	Middle School: January 7 Prek-K: January 15	virtual	PreK, K, 1-5, 6-8	IB, Language Immersion	NW
Scuola Italiana of Portland 971-270-0470 scuola.us/preschool/	By appointment. info@scuola.us	virtual	PreK	Italian Language	NW

Give an education that
extends beyond borders.

The world needs global perspectives
now more than ever.

The International School offers a
preschool and elementary
education that opens up
a world of possibilities.

Visit intlschool.org or email
admissions@intlschool.org
to find out more.

VIRTUAL OPEN HOUSE - JANUARY 26

Chinese • Spanish • Japanese
International Baccalaureate
Preschool – 5th grade
Downtown / S Waterfront, Portland



**The
International
School**



Open to Learning and Growing

OES prepares pre-kindergarten to grade 12 students for higher education and lifelong learning with students engaging deeply and taking active, empowered roles in advancing their education.



IMPORTANT DATES in 2021:

Virtual Info Evening
Wednesday, January 6, 7 p.m.
oes.edu/infoevening

Lower School Application Deadline
January 21

**Middle and Upper School
Application Deadline**
January 28



Oregon Episcopal School
ALWAYS OPEN

6300 SW Nicol Road | Portland, OR 97223 | 503-768-3115 | oes.edu/admissions

REMARKABLY DIFFERENT



FRANCISCAN
MONTESSORI EARTH SCHOOL
REMARKABLY DIFFERENT

Small, mixed-age classroom groups.
State approved Health and Safety Plan.

Expanding Minds.

Exploration of language, art, and science in step with a child's interests and needs.

Nurturing Spirits.

Individualized instruction within a community of kindness and respect.

Stewarding the Earth.

Access to acres of outdoor gardens for learning and play.

Franciscan Montessori Earth School
Portland, Oregon, 97236-2316 | 503-760-8220

INFO@FMES.ORG WWW.FMES.ORG

Stay up-to-date
on school
open houses
with our
online
calendar:

pdxparent.com/school-open-houses



VIRTUAL OPEN HOUSE

Friday, January 9, 9 a.m.

This Open House is for Preschool-7th grade admissions
for fall 2021.

There will be a presentation about ILA Maternelle and
Elementary Program by the Directors, tours of the campus
and classrooms, and an opportunity for Q & A with the
curriculum and instruction Director, after School Director,
and current parents.

We're located in Lake Oswego. Direct questions to:
contact@ilapdx.org or 503-662-8452 • www.ilapdx.org





Distance
Learning
Started:
March 17th

Days of School
Missed:
1

LANGUAGE IMMERSION | INTERNATIONAL BACCALAUREATE (IB) | PRESCHOOL – 8TH GRADE

Proven distance learning. Tuition relief while we're away.
Prepared when it's safe to return.

Discover why immersion is so much more than learning another language...
and how community transcends a campus.

PRESCHOOL-KINDERGARTEN OPENINGS FOR 2020/2021 AND 2021/2022

Enroll early—secure your spot for next year, and save on tuition this year!

Let us bring FAIS to you: www.faispdx.org/VirtualAdmissionsCenter

- Register for 1/15 Virtual Open House
- View campus photo tour
- Schedule a 1:1 Zoom meeting

*"I conduct my Zoom calls not far from my daughter's desk, and hear her erupt with laughter constantly.
We are so happy to be part of the FAIS family. Thank you, thank you!" –Annie and Jonathan*



CATHOLIC SCHOOLS

The Choice that Makes a Difference!

Academic Excellence • Faith Formation • Rich Co-Curricular Activities • Before and After School Care
Registered and Recognized by the State of Oregon • Accredited by the Western Catholic Educational Association (WCEA)



All Saints School • Grades PreK-8

Virtual Open Houses:

PreK-K: January 21, 2021, 6:30 p.m.

Grades 1-8: January 28, 2021, 6:30 p.m.

Accepting applications online beginning January 21

601 NE Cesar E. Chavez Blvd., Portland, OR 97232
503-236-6205 | cruss@allsaintsportland.com
www.allsaintsportland.com



St. John the Apostle Catholic School

St. John the Apostle Catholic School • Grades PreK-8

Now accepting applications,

apply online today!

Sunday, January 31, 2021, 9:30 a.m. - 12:30 p.m.

Tuesday, February 9, 2021, 5 - 7 p.m.

516 Fifth St., Oregon City, OR 97045
503-742-8230 | Fax: 503-742-8239
www.sja-eagles.com



Cathedral School • Grades PreK-8

Accepting applications, apply online!

Open House: January 31, 2021, 10 a.m.-12:30 p.m.

110 NW 17th Ave, Portland, OR 97209
503-275-9370 | admissions@cathedral-or.org
www.cathedral-or.org



St. Rose School • Grades PreK-8

Accepting applications, apply online today!

Open House: January 20, 6 p.m.

5309 NE Alameda St., Portland, OR 97213
503-281-1912
www.strosepdx.org



St. Clare School • Grades K-8

Accepting applications, apply online!

Open House: January 31, 12-2 p.m.

1807 SW Freeman St., Portland, OR 97219
503-244-7600 | info@stclarepdx.org
www.stclarepdx.org



Valley Catholic Early Learning, Elementary & Middle School

Contact us for more information about current openings

4420 SW St. Marys Dr., Beaverton, OR 97078
503-644-3745
www.valley.catholic.org



St. John Fisher School • Grades K-8

Now accepting registrations for 2021-22!

4581 SW Nevada St., Portland, OR 97219
503-246-3234 | mholub@sjfschool.org
www.sjfschool.org

Prek, Afterschool,
Weekend classes,
all ages

**Scuola
Italiana
di Portland**



OPEN HOUSES — FALL 2021

Check out our website for: Our Virtual Open House Video
Zoom Informational Open House • scuola.us/preschool

info@scuola.us • 971-270-0470 • scuola.us

**For Lifelong
Learning &
Success**

**West Hills
MONTESSORI SCHOOL**



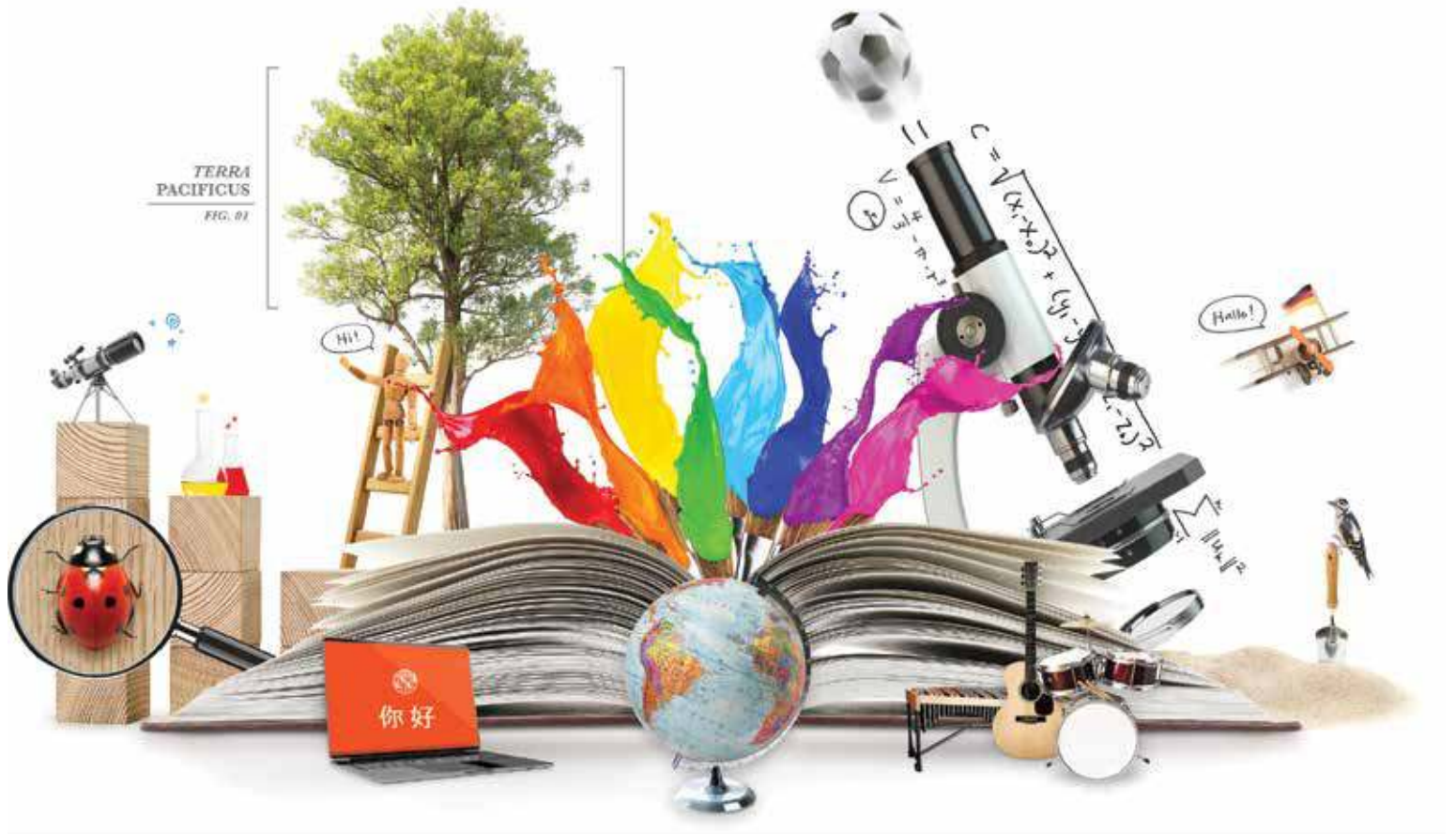
SW Pdx and Lake Oswego
503-246-5495
WestHills-Montessori.com

**Ignite
Your Child's
Potential**

**Toddler
Preschool
Elementary**



EXÜBERANCE IN LEARNING



Inspired global learning through an IB education.

Attend our January 24, 2021 Virtual Open House
to learn about our German and Chinese programs!



German International School

www.gspdx.org

Meet Your Pediatric Team Before Baby Arrives

Quarantine Baby Boom. Your baby's first visit right here in the neighborhood for you.

Book a no-charge virtual Meet & Greet appointment to get-to-know your future pediatric team. A chance to ask a provider about parenthood and our practice before baby arrives.

BOOK APPOINTMENT



www.sellwoodmd.com
503-595-9300